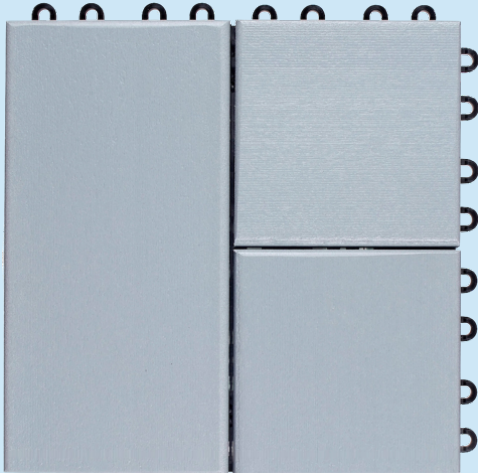




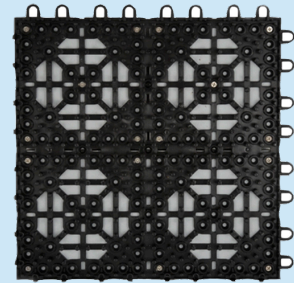
Weatherstone Tile



Dimensions: 12-1/8"x12-1/8"x1-1/4"

Tile Weight: 3.5 lbs.

Weatherstone Composite Deck Tiles are made for residential or commercial applications. The composite is made from **RECYCLED High Density Polyethylene (HDPE)** mixed with a mineral foam creating one of the most advanced and **ECO-friendly** composite formulas available. Covered by manufactures **50 year limited warranty** that the material will not split, crack, or splinter.



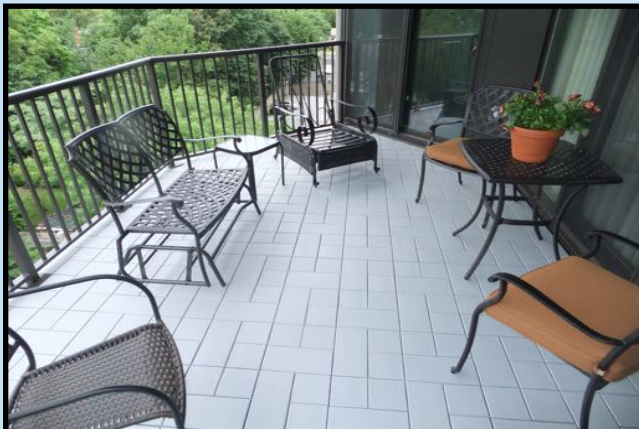
Email: support@coverdeck.com

Website: www.coverdeck.com

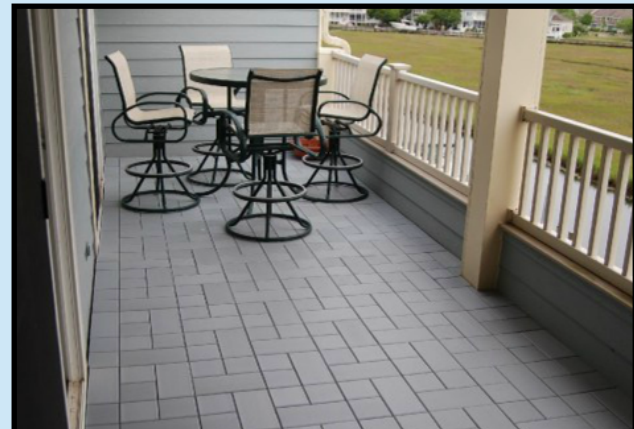
(800) 550-3325



Color: Redwood **Pattern:** Slate **Finish:** Matte



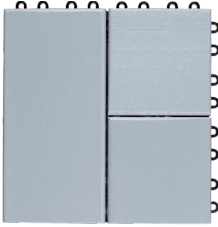
Color: Gray **Pattern:** Slate **Finish:** Matte



Color: Anchor Gray **Pattern:** Slate **Finish:** Matte

Weatherstone Tile

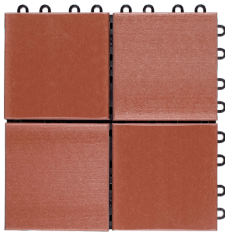
Patterns:



Slate



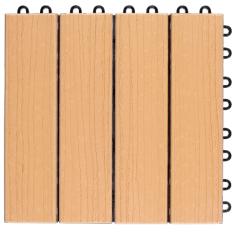
Color: Gray **Pattern:** Slate **Finish:** Matte



6in.



Color: Redwood **Pattern:** 6in. **Finish:** Matte



4 Slat



Color: Honey Beige **Pattern:** 4 Slat **Finish:** Woodgrain

Subsurfaces:

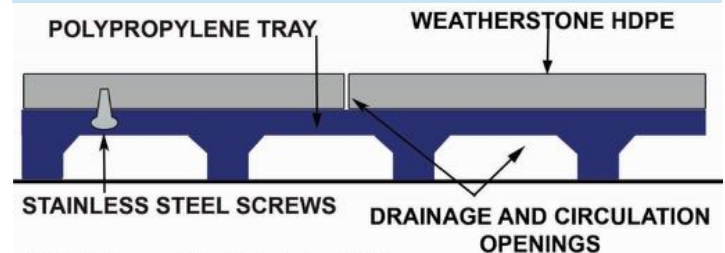
Weatherstone Tiles can be installed over any hard flat surface including existing decks. Installation on flat roof decks may require Protection Mat.

Features:

- Will not split, crack or splinter
- Low Maintenance
- No Noticeable Fading
- Water does not penetrate
- Mold and mildew resistant
- Slip resistant

Applications:

- Roof Decks
- Patios
- Balconies
- Porches
- Wood Decks
- Sun Rooms

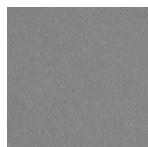


SYSTEM DETAIL

Colors:



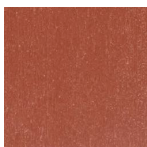
Gray



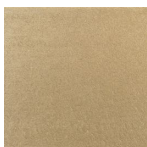
Anchor Gray



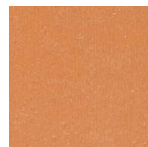
Putty



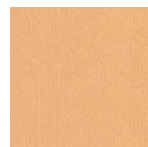
Redwood



Honey Beige

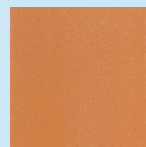


Cedar

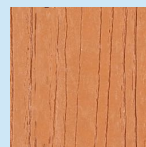


Tan

Finishes



Matte



Woodgrain

Polypropylene Tray Specifications

Size	12-1/8"x12-1/8"x1/2"
Loading	16,000lbs. of dead load per sq. ft.
Support	400 oversized gussied supports
Locks	32 latch locks; 2 sides with 8 male parts; 2 sides with 8 female parts
Material	Polypropylene
Service Range	-30° to +170°

*Resistant to weak Acids, Weak Alkalis, Strong Alkalis

*Fungus and Mildew Resistant