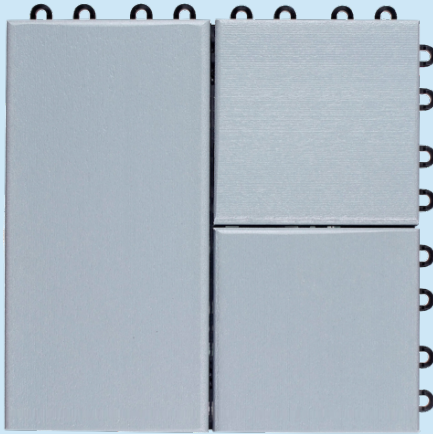




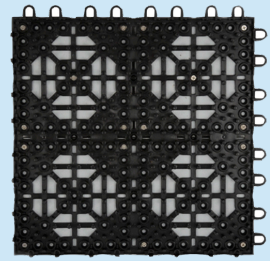
# Weatherstone Tile



**Dimensions:** 12-1/8"x12-1/8"x1-1/4"

**Tile Weight:** 3.5 lbs.

**Weatherstone Composite Deck Tiles** are made for residential or commercial applications. The composite is made from **RECYCLED High Density Polyethylene (HDPE)** mixed with a mineral foam creating one of the most advanced and **ECO-friendly** composite formulas available. Covered by manufactures **50 year limited warranty** that the material will not split, crack, or splinter.



Email: [support@coverdeck.com](mailto:support@coverdeck.com)

Website: [www.coverdeck.com](http://www.coverdeck.com)

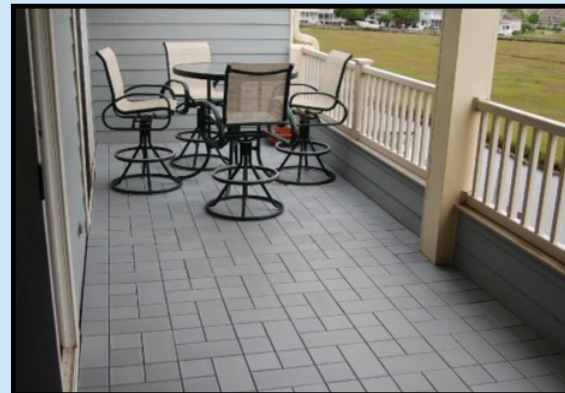
**(800) 550-3325**



**Color:** Redwood **Pattern:** Slate **Finish:** Matte



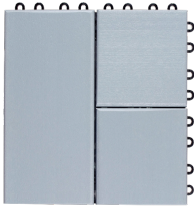
**Color:** Gray **Pattern:** Slate **Finish:** Matte



**Color:** Anchor Gray **Pattern:** Slate **Finish:** Matte

# Weatherstone Tile

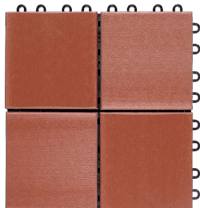
## Patterns:



Slate



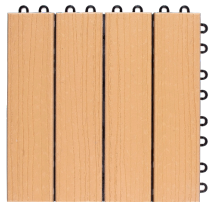
**Color:** Gray **Pattern:** Slate **Finish:** Matte



6in.



**Color:** Redwood **Pattern:** 6in. **Finish:** Matte



4 Slat



**Color:** Honey Beige **Pattern:** 4 Slat **Finish:** Woodgrain

## Subsurfaces:

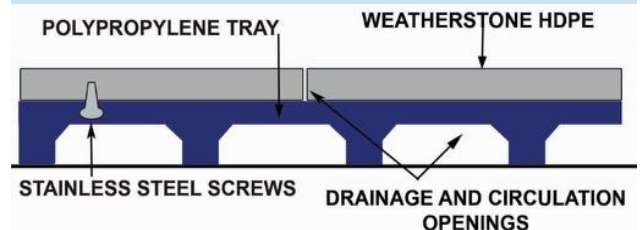
Weatherstone Tiles can be installed over any hard flat surface including existing decks. Installation on flat roof decks may require Protection Mat.

## Features:

- Will not split, crack or splinter
- Low Maintenance
- No Noticeable Fading
- Water does not penetrate
- Mold and mildew resistant

## Applications:

- Roof Decks
- Balconies
- Wood Decks
- Patios
- Porches
- Sun Rooms

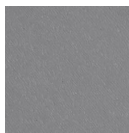


## SYSTEM DETAIL

## Colors:



Gray



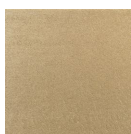
Anchor Gray



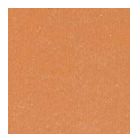
Putty



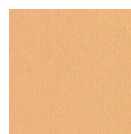
Redwood



Honey Beige

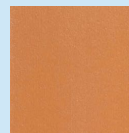


Cedar



Tan

## Finishes



Matte



Woodgrain

## Polypropylene Tray Specifications

Size	12-1/8"x12-1/8"x1/2"
Loading	16,000lbs. of dead load per sq. ft.
Support	400 oversized gussied supports
Locks	32 latch locks; 2 sides with 8 male parts; 2 sides with 8 female parts
Material	Polypropylene
Service Range	-30° to +170°

\*Resistant to weak Acids, Weak Alkalis, Strong Alkalis  
\*Fungus and Mildew Resistant