



For More Information Please Contact
Coverdeck Systems®

Phone: (800) 550-3325
(302) 427-7578

Email: support@coverdeck.com
www.coverdeck.com

Carpet Tile

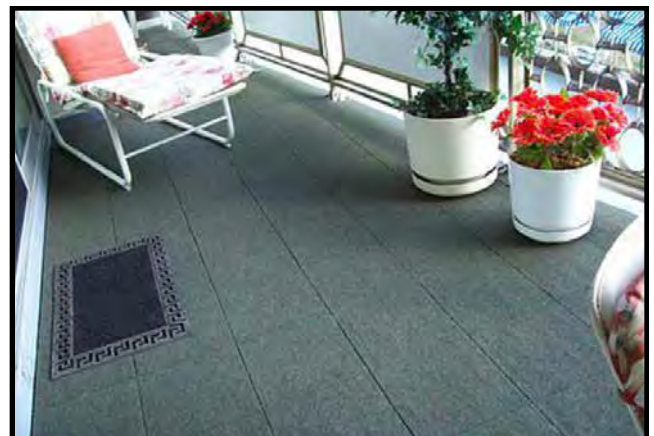
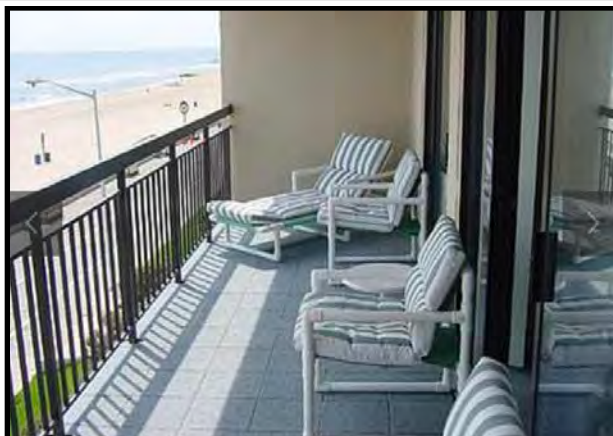
Item Number: 1100

Material: Unbacked Needlepoint
Polypropylene Carpet & Polypropylene
Tray

Dimensions: 12 1/8" x 12 1/8"

Thickness: 5/8"

Tile Weight: 1.02 lbs.



Carpet Tile

COVERDECK SYSTEMS CARPET TILES are a modular carpet system designed for indoor or outdoor installation. The interlocking tray elevates the 34 oz. unbacked needlepoint polypropylene carpet finish 5/8" above the sub surface allowing the tiles to drain freely.

The snap together design makes installation easy and fast, requiring no special tools or adhesives. Our unique interlock allows the tiles to expand and contract individually to help prevent buckling. COVERDECK SYSTEMS patterned CARPET TILE (US Patent #5666772)

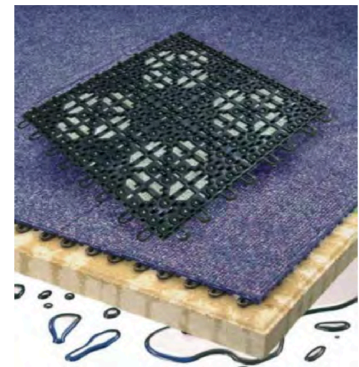
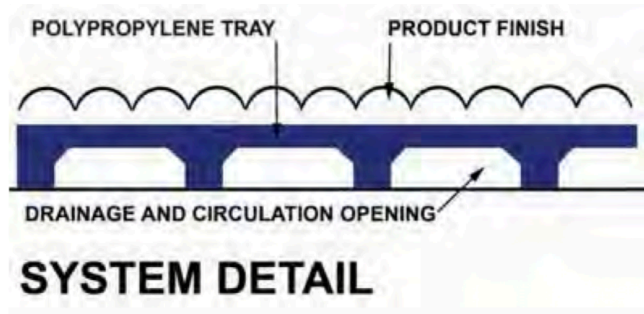
COVERDECK SYSTEMS CARPET TILES can be installed over any hard surface including existing decks. If you are planning on using COVERDECK SYSTEMS CARPET TILES over grass or sand, we recommend using our TEMPFLOOR as a base. Installation on roof decks may require a PROTECTION MAT (product #2002).

Applications

- Balconies
- Roof decks
- Basements
- Trade Shows and Exhibit Floors
- Patios, Decks and Docks
- Pool and Spa areas
- Laundry Rooms

Features

- Unbacked Needlepoint Polypropylene Carpet
- Drains Instantly
- Dries Quickly
- Protects your sub floor
- Snaps together easily
- Uses no adhesive
- Mildew and Mold resistant
- Carpet has UV stabilization
- Helps prevent concrete deterioration
- Accepts up to 16,000 lbs of dead Load per square foot



Color Selection:



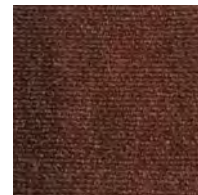
March Wind



Quail



Jazzy



Fiesta



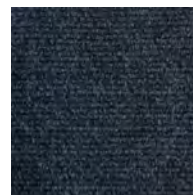
*Cobble
Stone



Citrus Leaf



*Camel



Blue Berry



Autumn
Woods



After
Midnight

*Denotes a Non Stock Item